

# Development Opportunity

## 3.86 Acres

## Fall 2013



### PROPERTY DETAILS

<b>Area</b>	3.86 Acres or 168,142 sq ft
<b>Price</b>	\$ 1,400,000.00 / \$8.33 per sq.ft.
<b>General information</b>	<p>Excellent development opportunity in Dartmouth, Nova Scotia. Currently zoned C3 with municipal sewer and water.</p> <p>Located in an exclusive residential area off the Waverley Road within walking distance to the 40 Acre Shubie Park and walking trails.</p> <p>Ideal for a multi-residential development.</p>

**BROKERS PROTECTED –  
please contact**

**Bart Henneberry, CMA, MBA**

Cell: 902.830.2117

[www.signatureproperties.ca](http://www.signatureproperties.ca)

**Signature Commercial Realty**

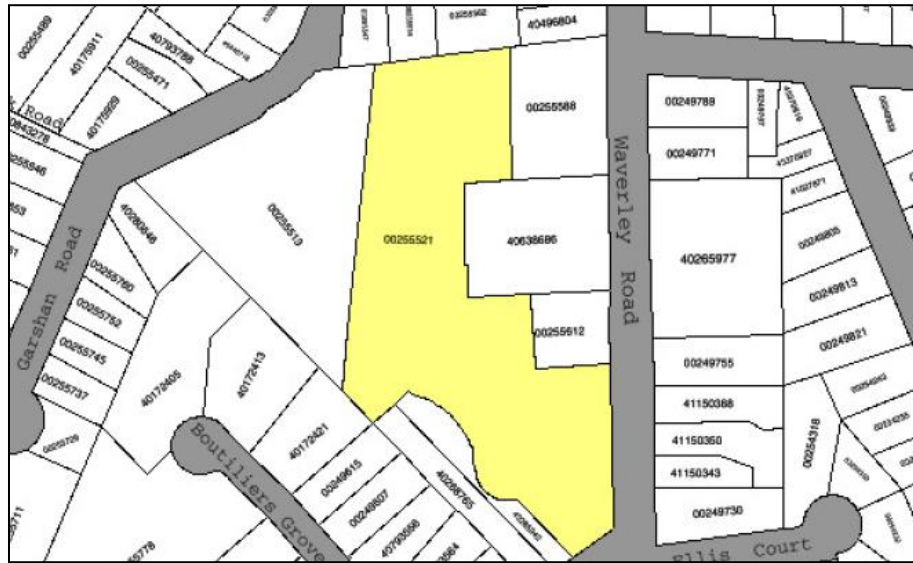
43 Dundas Street - Dartmouth, NS B2Y 2V2

Bus: 902.422.2122

[bhenneberry@signatureproperties.ca](mailto:bhenneberry@signatureproperties.ca)

233 Waverley Road – Dartmouth, NS

# Property online



# Survey - 1981



# Location

