

Warehouse

Fall 2015

Available for Sale



PROPERTY DETAILS

Property Type:	Commercial/light Industrial wood & steel frame, office/storage
Age:	23 +/- years, 2002 warehouse addition
Building size:	11,254 sq.ft. Main Floor: 8,393 sq.ft. Second Floor: 2,861 sq.ft. (all office)
Lot size:	46,288 sq.ft.
Ceiling Height:	18 ft to 24 ft clear
Loading:	1 full dock (8'x10'), 1 ½ dock (10'x10'), 1 grade (8'x8')
Selling Price	\$1.2 m
General information	Located in the Burnside Business Park, features 4 attached office units on the main floor; 7 office units, training/boardroom, lunchroom and 2 washrooms on each floor

**BROKERS PROTECTED –
please contact**

Bart Henneberry, CPA, CMA, MBA

Cell: 902.830.2117

www.signatureproperties.ca

Signature Commercial Realty

160 – 205 Bluewater Road. Bedford, NS B4B 1H1

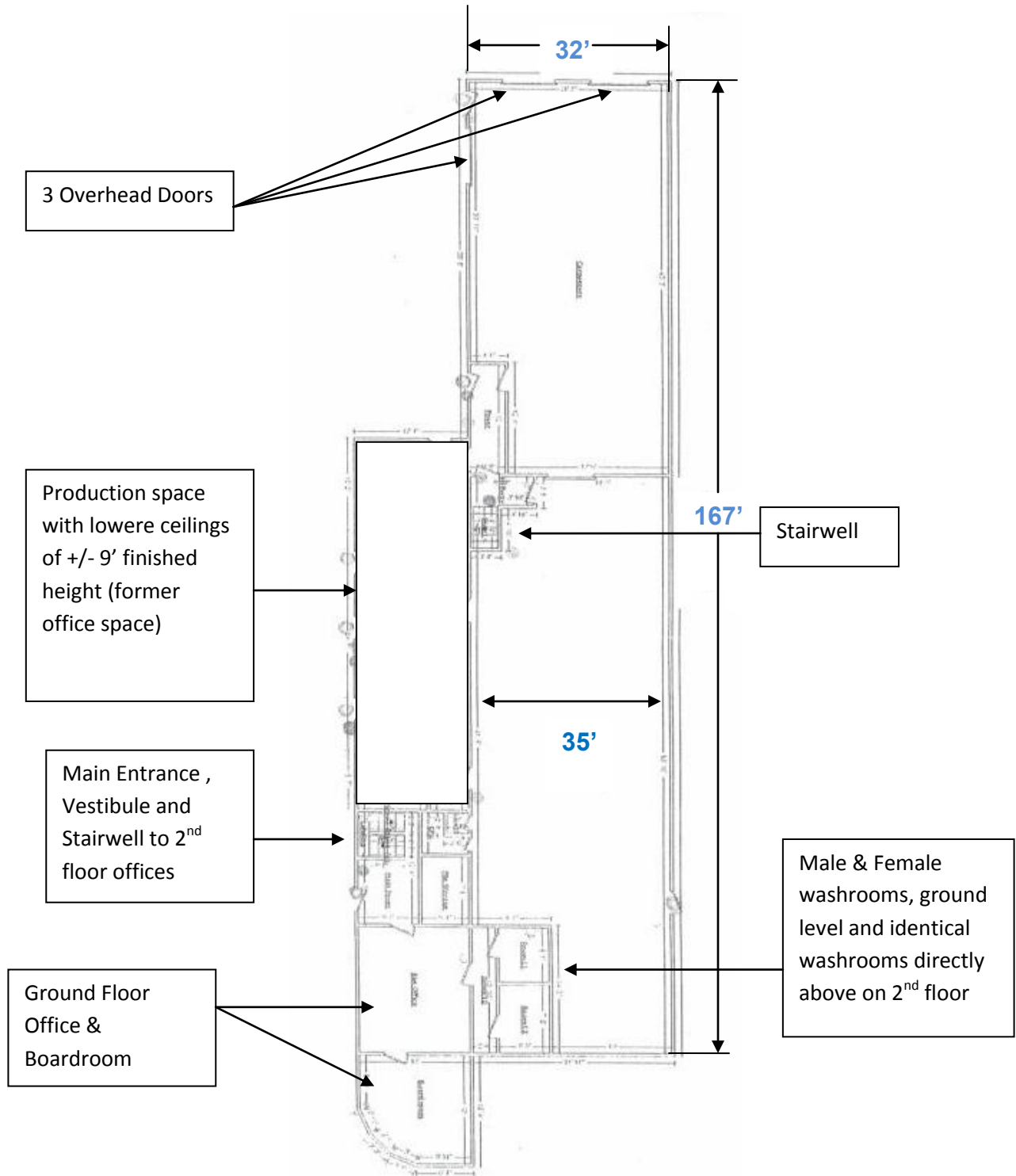
Bus: 902.422.2122

bhenneberry@signatureproperties.ca



90 Simmonds Drive – Dartmouth, NS

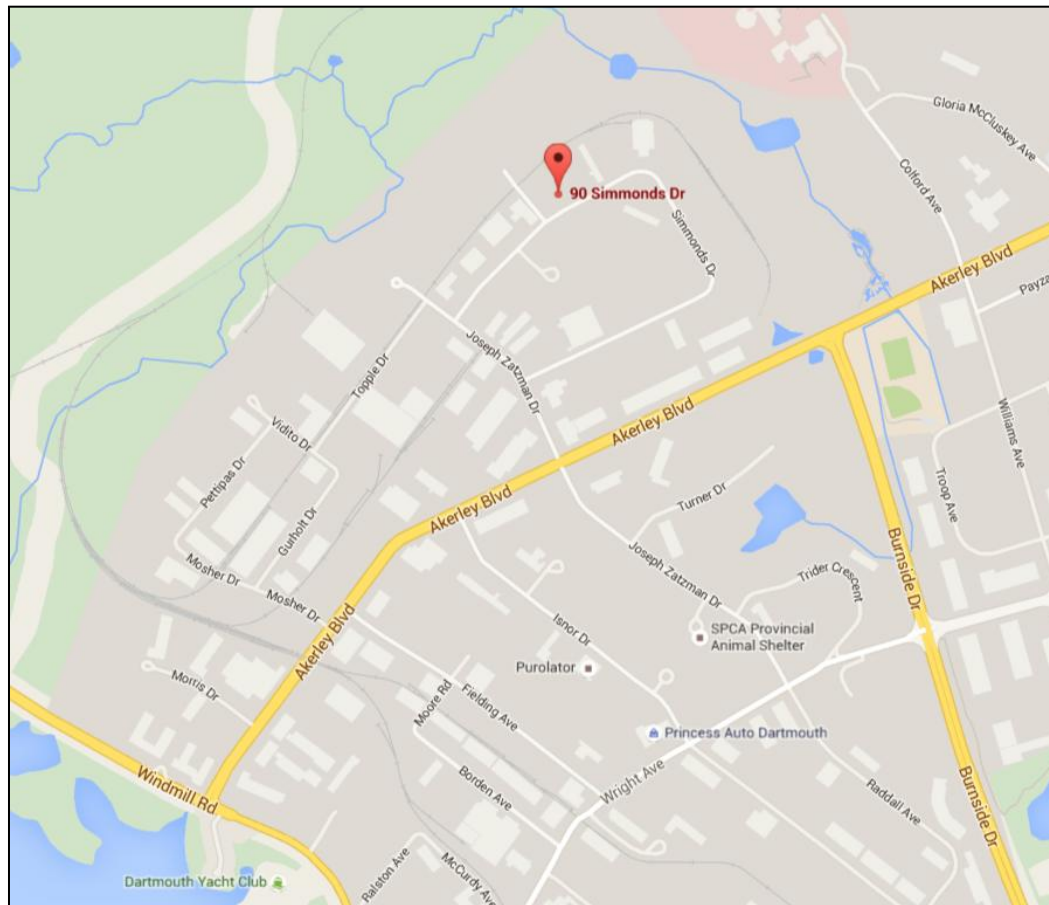
Floor Plan: Main Level



Area Overview

Burnside Business Park is home to more than 1,400 businesses employing in excess of 18,000+ people. Burnside Park is located within minutes of downtown Halifax, the Port of Halifax, the Halifax International Airport and surrounding residential communities.

Within the boundaries of Burnside are industrial and manufacturing facilities, Class-A office developments, several full-service quality hotels & meeting spaces, fantastic restaurants and retail outlets, and natural park areas with walking trails and sport facilities. Burnside Park is also the transportation and warehousing center of the Greater Halifax economy. New office and industrial development projects continue to emerge in Burnside, and will ensure the continued success and growth of this regional monument.



Property Map

